



SOCIO ECONOMIC INDICATORS

| | |
|---|---|
| Independence | 1960 |
| Area | 475,442 km ² , 10 main Regions |
| Population | 27.2 million (2021) – Urban: 58% |
| Population growth rate | 2.6% (2021) |
| Life expectancy | 61 years (2020) |
| Languages | Officials: French, English |
| Foreign direct investment, net inflows (% of GDP) | 1.9% (2021) |
| GDP (current USD) | 45.34 billion (2021) |
| GDP growth rate (annual) | 3.6% (2021) |
| Human capital Index | 0.4 (2020) |
| Inflation, consumer prices (annual) | 2.3% (2021) |
| Poverty headcount ratio (at 2.25\$ a day) | 25.7% (2014) |
| Forest area (% of land area): | 43% (2020) |

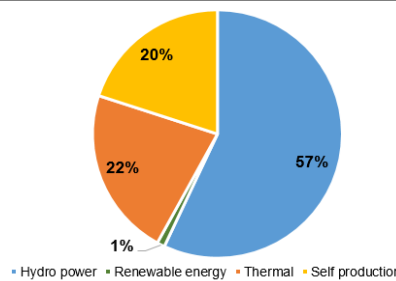
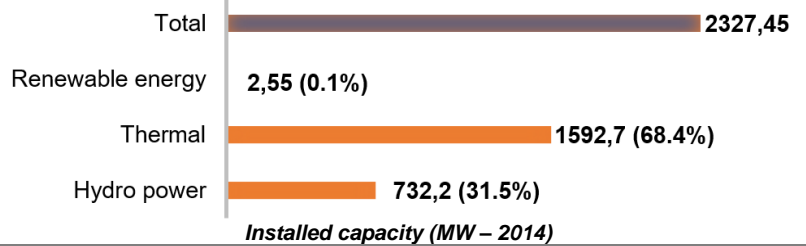
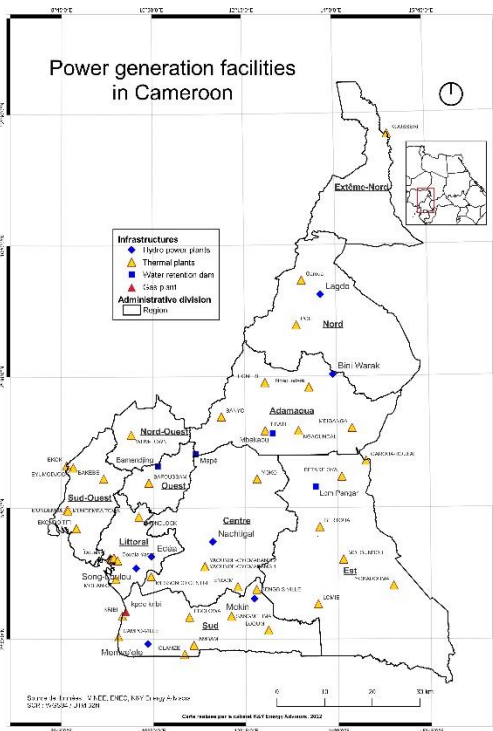
STAKEHOLDERS

| | |
|--------------------------|---|
| Institutional | Ministry of Water Resources and Energy (MINEE) |
| Electricity Regulator | Electricity Sector Regulatory Agency (ARSEL) |
| Rural electrification | Rural Electrification Agency (AER) |
| Electricity producers | EDC, Hydro Mekin, ENEO, NHPC, The Globeleq Group, AER, IPPs (KPDC and DPDC) |
| Electricity distributor | ENEO |
| Transport of electricity | SONATREL |
| Partners | EDF, AGGREKO, SCATEC, HYDROMINE |

LEGAL FRAMEWORK

| |
|--|
| National Energy Plan (1990) |
| National Action Plan Energy for Poverty Reduction (2005) |
| Law 2011, governing the electricity sector (2011) |
| National Energy Efficiency Policy (2014) |
| Electricity Sector Development Plan – PDSE (2014) |
| Rural Electrification Master Plan – PDER- (2016) |
| FDSE Electricity Sector Development Fund (2020) |

ELECTRICITY GENERATION



Upcoming and ongoing projects

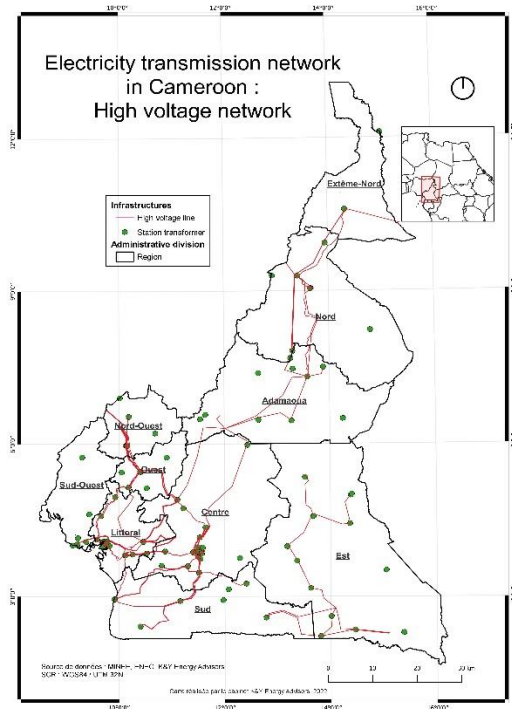
| | |
|------------------------|--------|
| Bini à warak | 75 MW |
| Chollet | 600MW |
| Colomines | 13,6MW |
| Kikot | 540 MW |
| Mentchum | 84MW |
| Nachtigal | 420MW |
| Ndjock | 120 MW |
| Som Mbengue | 880 MW |
| Solar (grid connected) | >5 |

Electricity generation (2014)

| | |
|--|--------------|
| Electricity production (GWh-2021) | 6,445 |
| Electricity consumption (GWh-2021) | 6,084 |
| Electric power consumption per capita (kWh-2014) | 280 |
| Installed capacity (MW - 2030) | 2,327 (2014) |
| Losses (2014) | 11% |
| Electricity production from renewable sources, excluding hydroelectric (% of total-2015) | 1.1% |

- Cameroon has several sources for electricity generation, including hydroelectric, thermal, gas and renewable. Installed capacity in 2014 was estimated at 2,327 MW, for a total production of 7,696 gigawatt hours (GWh).
- Official forecasts estimate that in 2023, hydroelectricity could represent 75% of the electricity mix, compared to 54% in 2018.
- The electrical system in Cameroon has three interconnected networks:
 - ✓ The Northern Interconnected Network (RIN) is supplied by the Lagdo hydroelectric power station, with a capacity of 72 MW, and covers the Far North, North and Adamaoua regions.
 - ✓ The Eastern Interconnected Network (RIE), has six thermal power stations with a total installed capacity of 12 MW. It covers the Eastern Region.
 - ✓ The Southern Interconnected Network (RIS), covers the other six regions of Cameroon (Centre, Littoral, North-West, South, South-West and West). This network has two hydroelectric power stations: Songloulou (384 MW) and Edéa (276 MW).

ELECTRICITY TRANSMISSION



- In 2014, Cameroon had a total of 37,194 km of power lines, including the following:
 - 796 km of 225 kilovolts (kV) lines
 - 338 km of 110 kV lines
 - 1,210 km of 90 kV lines
 - 17,473 km of Medium Voltage Lines
 - 17,377 km of Low Voltage Lines
- In 2021, investments made by ENEO conducted to build 593 km of power lines and thus improve access to electricity. Indeed, 385 km of overhead medium voltage lines were built in 2021; 59.7 km of underground medium voltage lines and 148 km of overhead LV voltage lines
- Many network extension projects were financed by European Union, through the energy facility. Others are ongoing in the framework of PERACE, funded by the World Bank, European Union and EIB, and PAGIRN which includes regional electrification projects in ECCAS
- SONATREL is a public entity, created on 8th October 2015. Company is in charge of the operation, maintenance and development of the public electricity transmission networks throughout Cameroon, as well as the management of energy flows passing through them.
- SONATREL ensure:
 - ✓ The maintenance, renewal and conformity of electricity transmission facilities throughout the national territory
 - ✓ The consistency of the hypotheses for drawing up the development plan for transmission facilities with the multi-annual programming of electricity production investments
 - ✓ The connection and access to the public electricity transmission network of any authorised person who requests, in compliance with the applicable regulatory and technical requirements
 - ✓ The balance and stability of the electricity system

DISTRIBUTION NETWORK

The distribution network has 11,450 km of lines from 5.5 to 33kV and 11,158 km of lines from 220 to 380kV

Electricity access rate (2020): Urban: 94%; Rural: 25%; Total: 64.7%

Electricification rate (2015): Urban: 38%; Rural : 6%; Total: 23%

Targets regarding electrification rates in rural Cameroon by 2035

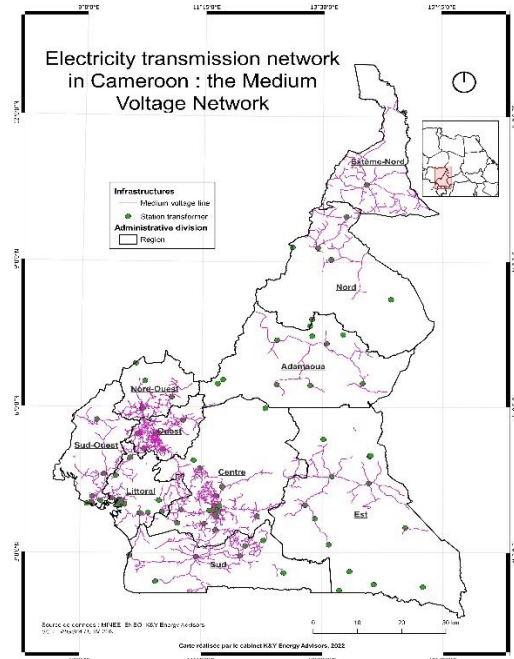


Subscribers (Eneo - 2021): 1,690,801. 45% based in Yaounde and Douala

SAIFI (2021) : 41.8 SAIDI (2021): 162.6 hours/year

Electricity Tariffs (households): 50-99FCFA/kWh (0.077 – 0.15€/kWh)

SOURCES: AER, ENEO, IEA, IRENA, MINEE, WORLD BANK



About K&Y Energy Advisors

- Consulting firm
- HQ: Cameroon - Yaounde
- RC/YAO/2022/B/1442
- NIU : M072217528378F
- PO-Box: 33231 Yaoundé
- (+237) 696 25 58 51 / 674 27 75 76
- ky@ky-advisors.com